

ORINHU®

REFLECTIONS OF DAWN



709/84 - Heil Base 164-7

ENG

Orinhu®

Orinhu® is a decorative finish with a surprising mix of antique velvet and modern metallic. Its flat velvet pearlescent texture rejuvenates your living space and transforms it into a tranquil and sophisticated atmosphere.

Technical Name

Pearl finish incorporating velvet feel.

Key Properties

- Unleaded
- Water based
- Washable (after full curing)
- Non-flammable
- Odorless
- 6 attractive base colors (700, 709, 718, 727, 730 or 750)
- Very low VOC content in compliance with:
 - EU directive 2010/79/EU
 - French decree No: 2011-321

Pack Size

- 1US Quart - (0.85 kg)
- 1US Gallon - (3.4 kg)

Recommended Uses

Internal applications, Orinhu® can be only applied in exterior conditions when top coted with Oxibond® 4005 Flat/Satin or Gloss.

Type of Substrate

Plaster, embossed wall coverings, gypsum board, concrete, cement rendering, brick work & block work.

Finish

Pearlescent finish.

Coverage

7-8 m² per kg.

Drying Time

15 minutes to 1 hour depending on temperature and humidity.

Thinner

No thinning required.

Preparation

All surfaces to be painted should be clean, dry and free from loose & flaking material. Rub down & rinse. Prime the substrate with the appropriate COLORTEK®

CODING SYSTEM

Color reference	Color name
730/41 - Somsom	Base 93-2
Background color /	



Instructions

Orinhu® is applied by laying the paint in all directions. - The same is repeated after drying for a second coat, 5 to 10 minutes later smooth down the surface using the special Orinhu® spatula or trowel by alternating strokes (this will show the velvet effect).

Do not apply at temperatures below 5° C or when rain is expected.

Recommendation

Achieving the correct lighting is critical to the success of Orinhu® walls. To get the best results it is important to light the surface to achieve the optimum pigment sparkle.

Cleaning

Remove as much product as possible from application equipment before cleaning. Clean equipment immediately after use with warm soapy water & rinse thoroughly.

Do not empty product into drains or watercourses.

Additional Info

Product batches are tested using a quality control system and are ISO 9001:2008 certified



Transportation & Storage

Care should be taken to avoid spillage. Protect from frost & humidity.

FR

Orinhu®

Orinhu® est une peinture décorative offrant une finition veloutée au reflet métallique. Sa texture nacrée rajeunit votre espace en lui procurant une atmosphère paisible et sophistiquée.

Nom Technique

Finition nacrée avec un effet veloutée.

SYSTÈME DE CODAGE

Référence couleur	Nom de la couleur
730/41 - Somsom	Base 93-2
Couleur de fond /	

Propriétés

- Ne contient pas de plomb
- Produit en base eau
- Lavable
- Inodore
- 6 bases (700, 709, 718, 727, 730 ou 750)
- Faible teneur en COV conformément aux:
 - Directive EU directive 2010/79/EU
 - Decret Français No: 2011-321

Emballage

- 1US Quart - (0.85 kg)
- 1US Gallon - (3.4 kg)



Usage Recommandé

Application en intérieur, Orinhu® peut être uniquement appliqué en extérieur lorsqu'il est recouvert avec la couche de protection Oxibond® 4005 Matt/Satiné ou Gloss.

Types de Support

Enduit, ciment, plâtre et plaque de plâtre, anciennes peintures usuelles absorbantes, etc.

Finition

Effet perle.

Rendement

7-8 m² par kg.

Temps de Séchage

Environ 15 à 60 minutes en fonction des conditions climatiques et de la température ambiante.

Diluant

Aucune dilution requise.

Préparation du Support

Le support doit être dur, propre, sain, sec, cohésif et libre de toute matière telle que salpêtre, mousse, lichen ou autres microorganismes pouvant empêcher l'adhérence du produit sur le support. Dans un premier temps, appliquer la couleur appropriée de la sous-couche COLORTEK® CO.ACRYL ou Famille C1 .

Application

Appliquer une première couche d'Orinhu® en déposant la peinture dans toutes les directions. Répéter le même processus une fois la première couche ayant séchée. 5 à 10 minutes après l'application de la seconde couche, lissez la surface en utilisant la spatule spécialement dédiée à cet effet en alternant les coups de spatule afin de révéler l'effet velouté.

Ne pas appliquer à une température ambiante inférieure à 5°C ou par temps pluvieux.

Recommandation

Il est recommandé d'installer un système d'illumination approprié afin de mettre en valeur l'effet nacré d'Orinhu®.

Nettoyage des Outils

Éliminer autant que possible le reste du produit de la surface des outils. Nettoyer ces derniers en les frottant vigoureusement avec de l'eau et du savon.

Ne pas vider les restes du produit dans égouts ou les voies d'eau.

Information Additionnelle

Le processus de fabrication de Orinhu® est soumis au plus stricts contrôles de qualité certifiés conformes au standard ISO 9001:2008.



Transport et Stockage

Stocker le produit à l'abri de l'humidité et des températures de gel.



Product designed in the EU

www.colortek.eu

info@colortek.eu



Synergy, Added Value, Continuous Improvement, Diversity, Integrity, Social Responsibility.



727/00 - Bark Base White



727/44 - Kassab Base 5-2



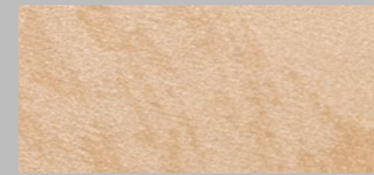
727/19 - Sadaf Base 40-2



727/14 - Kameh Base 40-2



730/00 - Assal Base 93-2



730/57 - Zanjabil Base 93-2



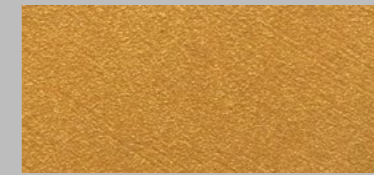
730/53 - Matte Base 126-5



718/24 - Ayloul Base 92-3



700/00 - Dehab Base R17



709/00 - Ghani Base R17



727/31 - Sama Base 19-3



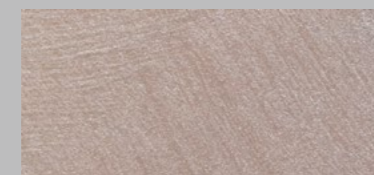
727/06 - Zarqa Base 115-1



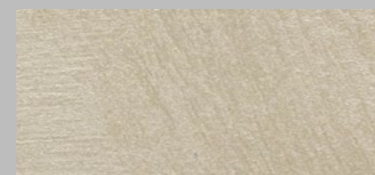
727/17 - Oud Base 40-2



727/34 - Yasmina Base 4-2



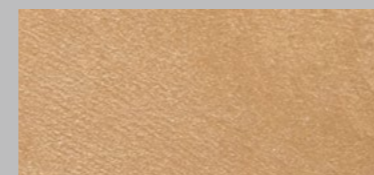
727/18 - Rkham Base 39-3



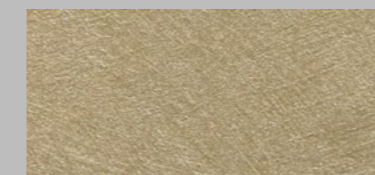
727/05 - Safi Base 40-2



730/41 - Somsom Base 93-2



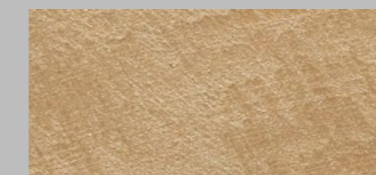
730/43 - Areej Base 93-2



730/59 - Folfol Base 129-3



730/65 - Dabbab Base 126-4



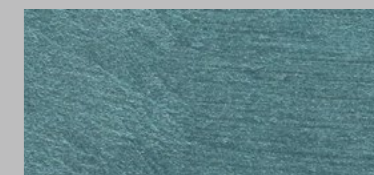
730/73 - Zaafaran Base 92-2



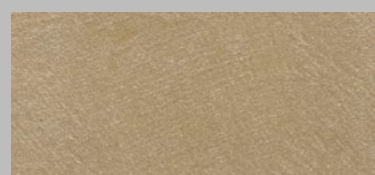
700/12 - Ghorub Base 91-5



727/79 - Kortasya Base 144-6



727/82 - Kasseen Base 110-4



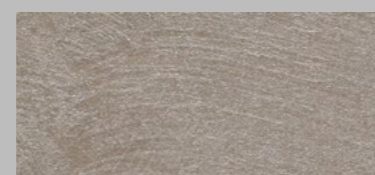
727/35 - Raha Base 40-5



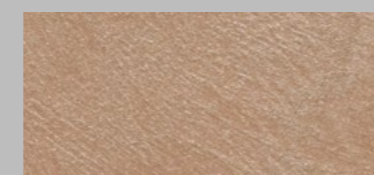
727/48 - Sokkar Base 40-3



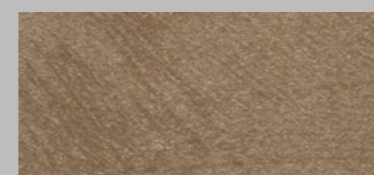
727/26 - Loz Base 34-2



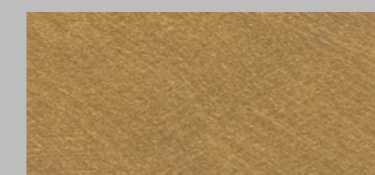
727/16 - Tanbak Base 37-5



727/55 - Sendian Base 122-1



730/51 - Zaytoun Base 129-4



700/09 - Sigha Base R17



700/62 - Ballout Base 128-4



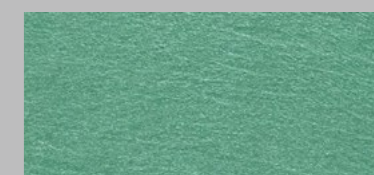
718/00 - Maghrbi Base R46



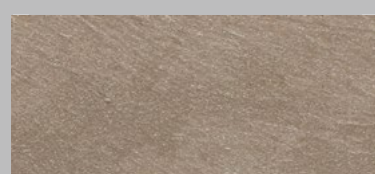
700/08 - Shams Base 91-5



727/39 - Dyala Base 111-4



727/33 - Habaq Base 66-6



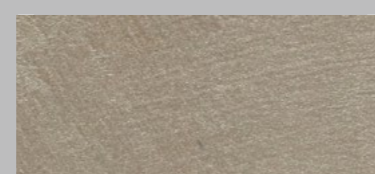
727/15 - Kronfol Base 33-2



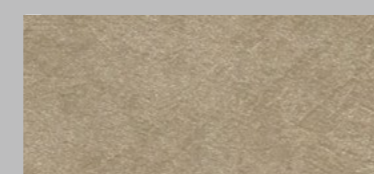
730/11 - Anbar Base 40-5



727/02 - Qasdir Base 124-1



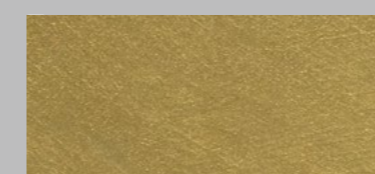
727/04 - Jaded Base 37-3



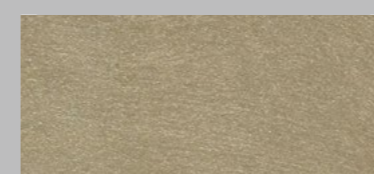
730/42 - Zhourat Base 128-6



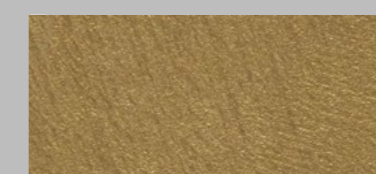
730/46 - Snoubar Base 150-5



700/10 - Yansoun Base 98-5



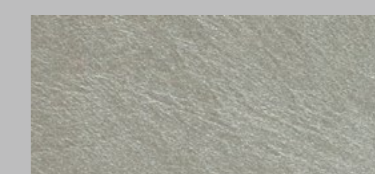
730/71 - Bhar Base 133-6



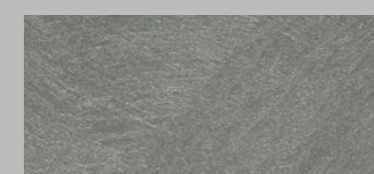
700/69 - Kammoun Base 97-4



718/77 - Sommak Base 92-4



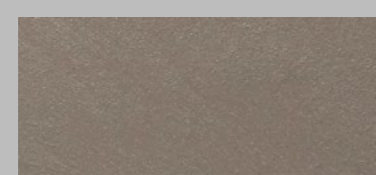
727/64 - Tabigh Base 136-1



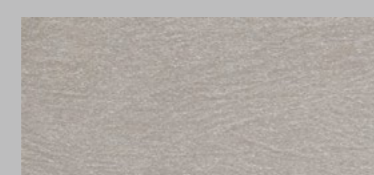
727/85 - Rihan Base 145-2



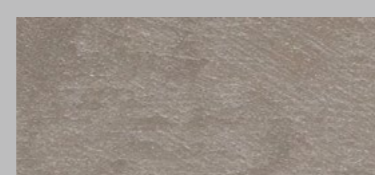
727/28 - Rsassi Base 34-3



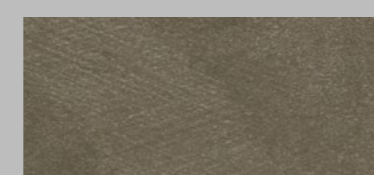
727/13 - Sahlab Base 35-2



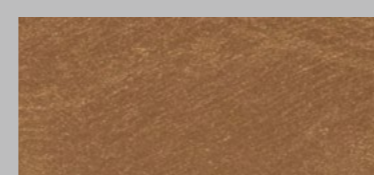
727/03 - Maedn Base 34-1



727/01 - Rmadi Base 124-2



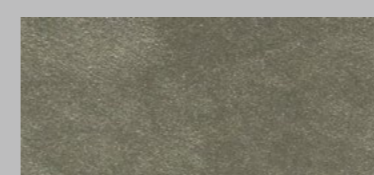
730/56 - Esmante Base 150-4



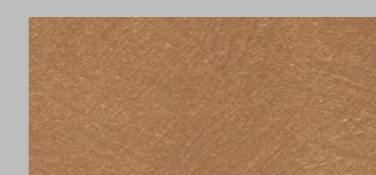
718/20 - Khashab Base 92-4



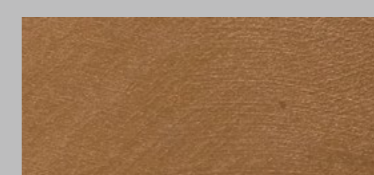
709/58 - Zayt Base 127-4



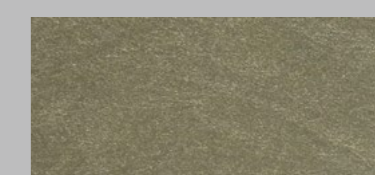
730/66 - Teen Base 133-5



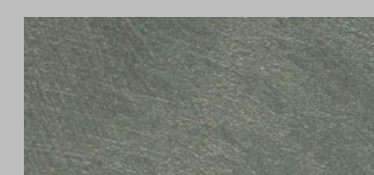
700/07 - Tourab Base 92-3



718/25 - Bronzi Base 92-4



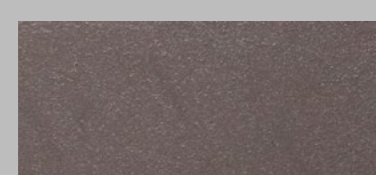
730/72 - Enab Base 136-6



730/74 - Al Assi Base 138-5



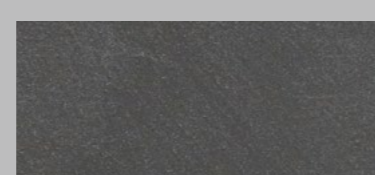
727/40 - Ghar Base 37-3



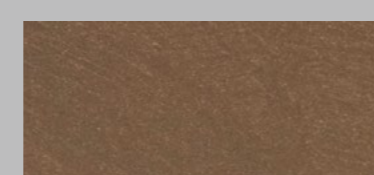
727/32 - Foda Base 124-2



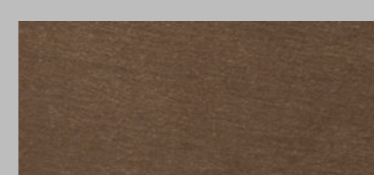
727/29 - Foulaz Base 148-7



727/30 - Leil Base 148-4



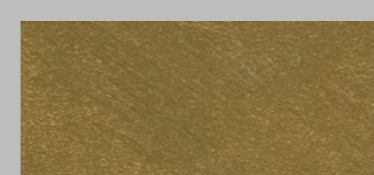
718/21 - Arz Base 164-1



718/22 - Kahwa Base 162-4



709/61 - Shay Base 129-5



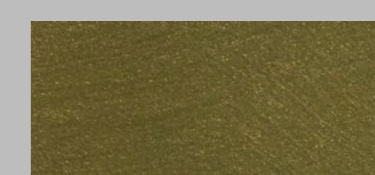
709/75 - Korfeh Base 165-1



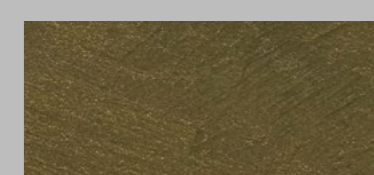
718/23 - Jenzar Base 163-4



750/00 - Nehass Base 88-4



709/81 - Nakheel Base 136-5



709/88 - Zaatar Base 165-6